



Weekly Report on the Epidemiology of COVID-19 in Ireland

Week 51

Health Protection Surveillance Centre

COVID-19 Epidemiology Team, HPSC, 21/12/2020

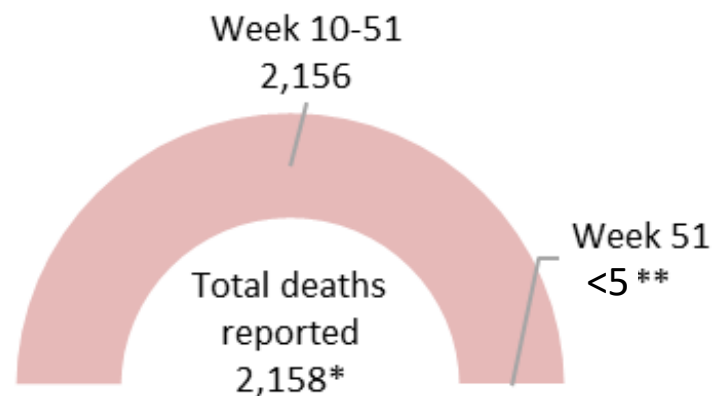
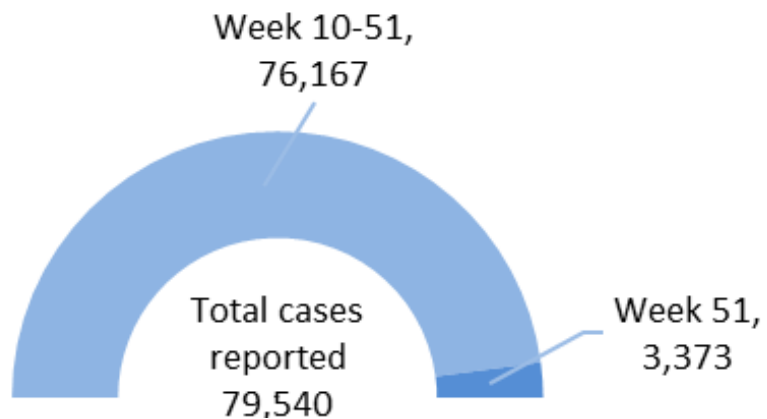
Dates to note:

- **Week 51 (13th December to 19th December 2020)**
- **Week 32 (2nd to 8th August 2020)**
- **Week 10 (1st to 7th March 2020)– The beginning of the pandemic in Ireland**

Note: The epidemiological weeks in this report, run from Sunday to Saturday, please refer to appendix 1 for a complete list of epidemiological weeks with start and end dates.

Note: Data were extracted from Computerised Infectious Disease Reporting (CIDR) system on 21/12/2020 and are provisional and subject to ongoing review, validation and update. As a result, figures in this report may differ from previously published figures.

Summary characteristics of COVID-19 cases notified in Ireland



* Total deaths reported include deaths from all case classifications (confirmed, probable and possible cases)

**The number of deaths relate only to cases notified and died in week 51. It does not include cases notified prior to week 51 and died in week 51.

	Total (week 10-week 51)		Week 51	
	Number	Percent	Number	Percent
Total number of confirmed cases	79,540		3,373	
Incidence rate of confirmed cases per 100,000 population	1670.4		70.8	
Number of cases hospitalised	5,615	7.06	144***	4.27
Number of cases admitted to ICU	654	0.82	3***	0.09
Number of deaths among confirmed cases	1,898	2.39	<5	0.06
Case fatality ratio (CFR %)	2.39		0.06	
Incidence rate of confirmed deaths per 100,000 population	39.86		0.04	
Number of cases associated with clusters	43,501	54.69	655	19.42
Number of imported cases	693	0.87	5	0.15
Number of cases in healthcare workers	12,862	16.17	303	8.98
Males	37,609	47.28	1701	50.43
Females	41,884	52.66	1659	49.18
M:F ratio	0.90		1.03	
Median (years)	39		36	
Mean age (years)	41		38	
Age range (years)	0 - 108		0 - 100	

***The number of cases hospitalised and admitted to ICU relate only to cases notified and admitted to hospital or ICU in week 51. It does not include cases notified prior to week 51 and admitted to hospital or ICU in week 51.

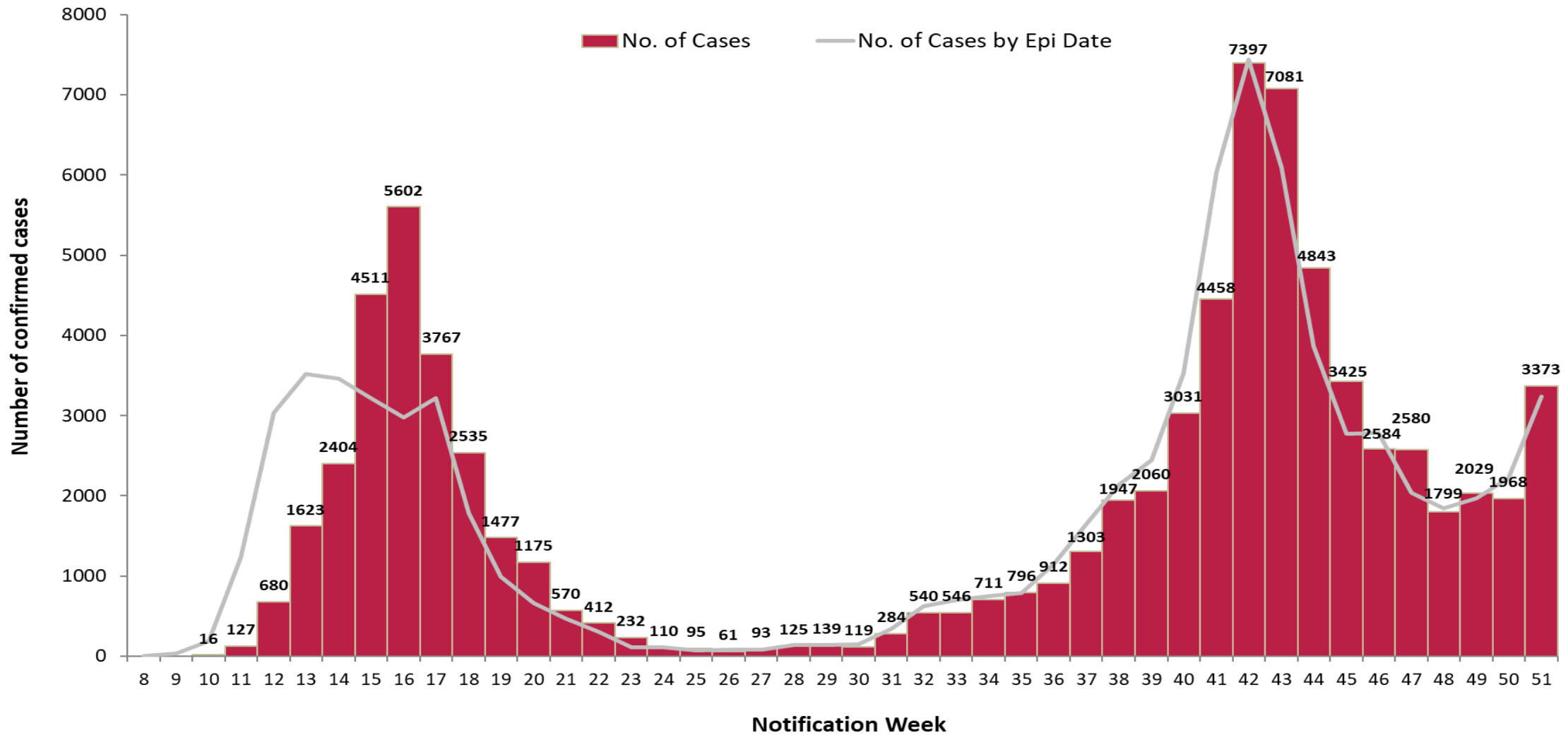


Figure 1: Number of confirmed COVID-19 cases by notification week and epidemiological week in Ireland between week 8 and week 51.

**Epidemiological date is based on the earliest of dates available on the case and taken from date of onset of symptoms, date of diagnosis, laboratory specimen collection date, laboratory received date, laboratory reported date or event creation date/notification date on CIDR. By using this date rather than event creation/ notification date, adjusts for any delays in testing/notification*

Between week 15 and 16 (05/04/2020– 19/04/2020) the daily number of COVID-19 events notified in Ireland is inflated due to batch reporting of cases with specimen dates between from 19/03/2020– 01/04/2020 in addition to real-time reporting of cases with contemporaneous specimen dates

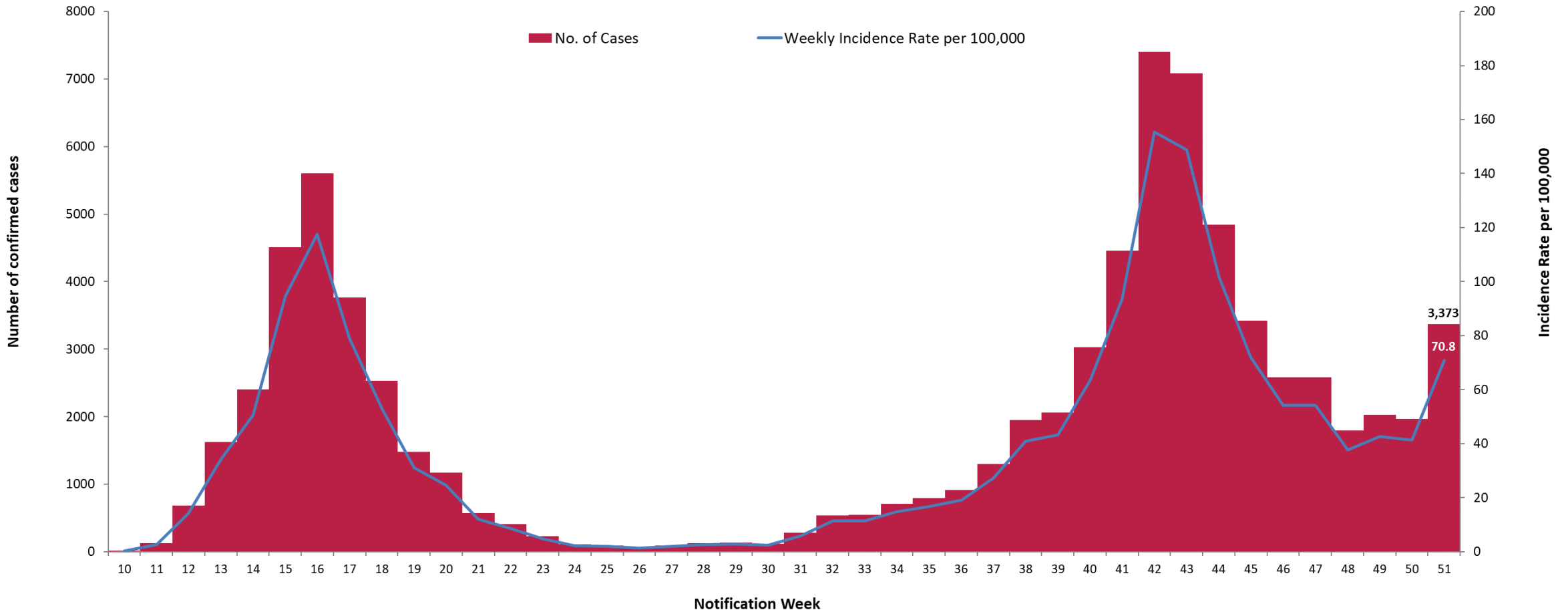
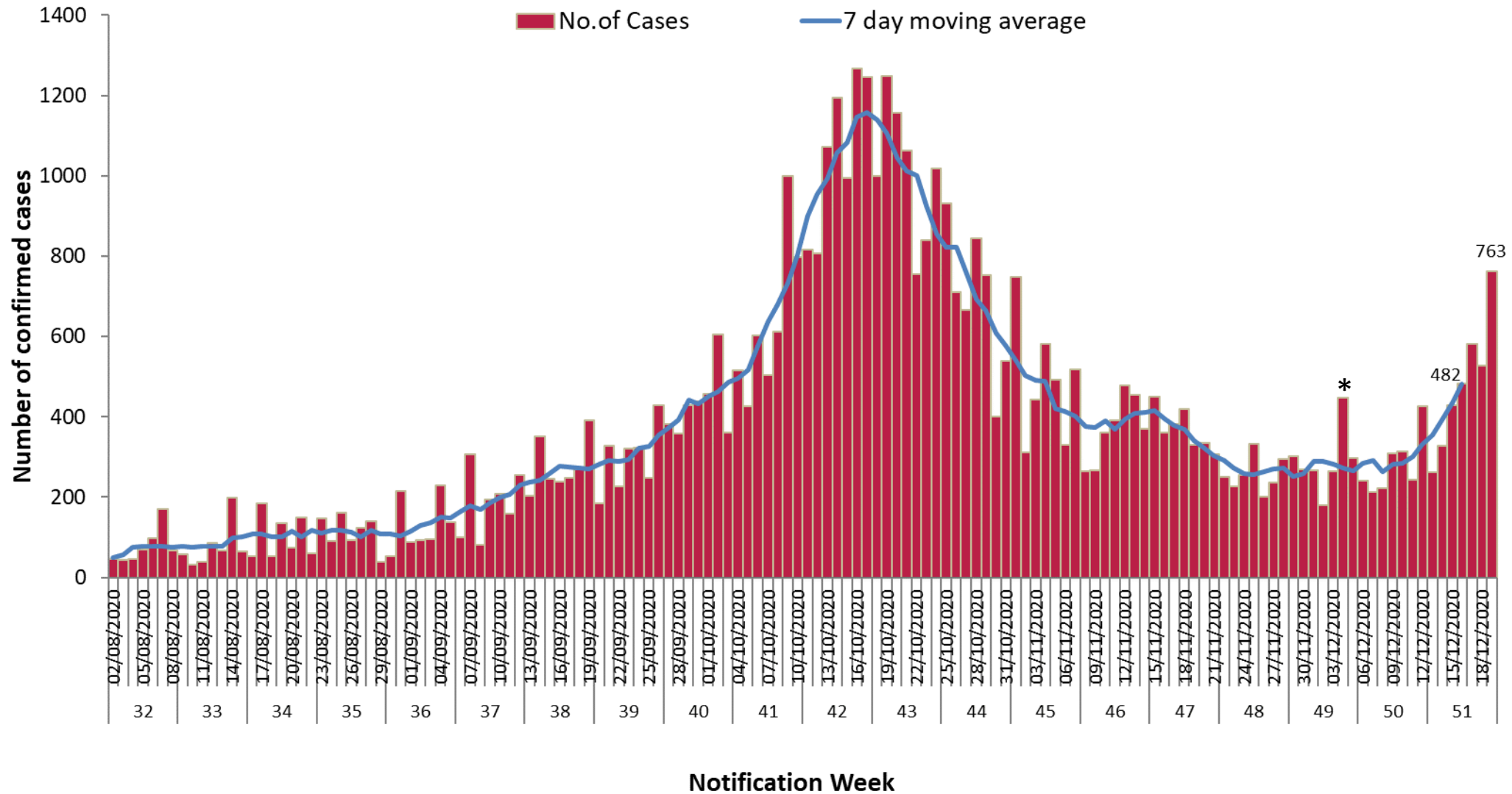


Figure 2: Number of confirmed COVID-19 cases by notification week and weekly incidence rate per 100,000 population in Ireland between week 10 and week 51.

**population data were taken from Census 2016*



*on the 04/12/2020 the number of COVID-19 cases notified in Ireland is inflated due to the inclusion of cases notified earlier in week 49 which were batch reported following an IT issue on 02/12/2020

Figure 3: Number of confirmed COVID-19 cases , and 7-day moving average, by notification date in Ireland between week 32 and week 51.

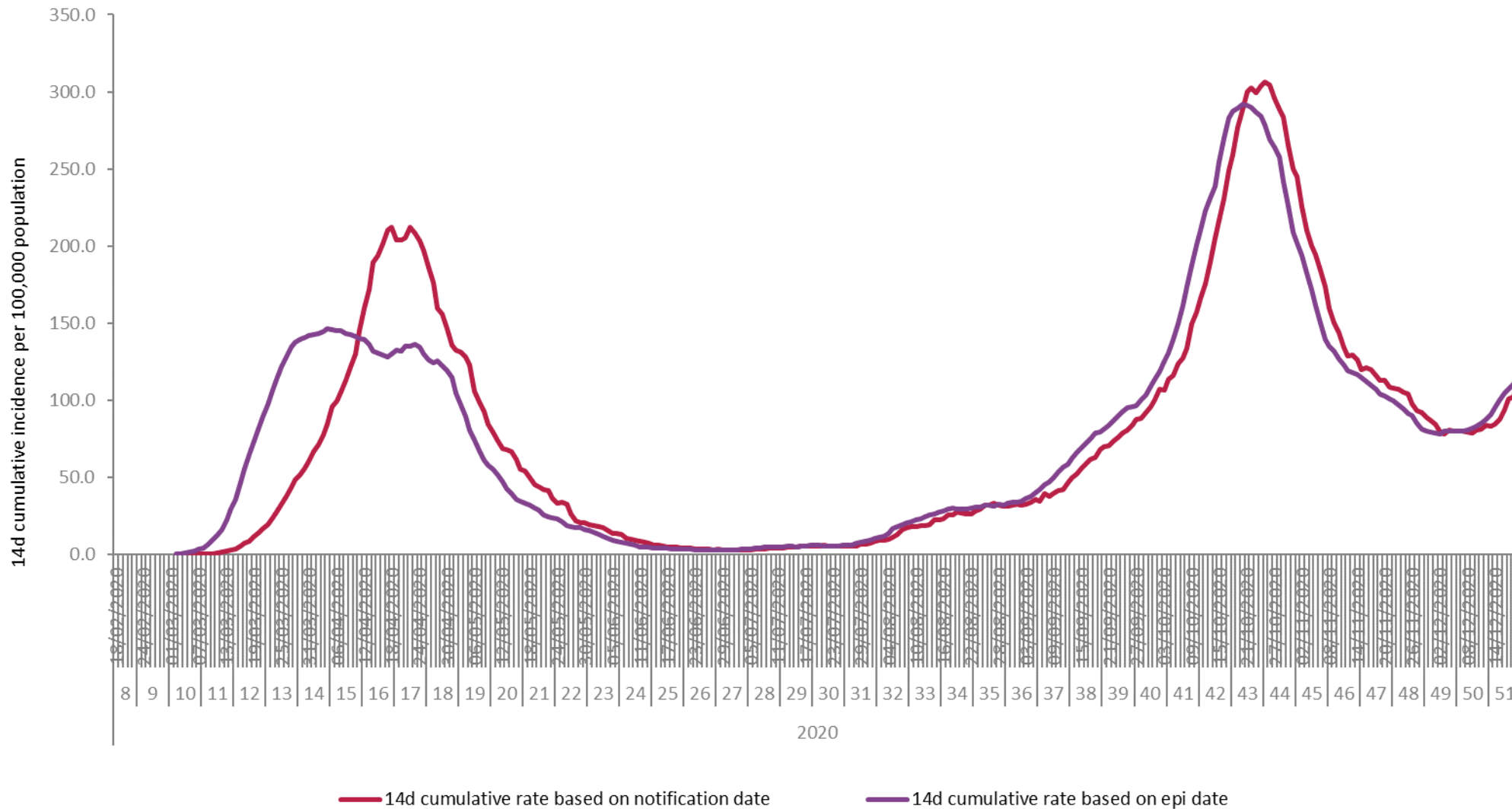


Figure 4a: Cumulative 14-day incidence rate of confirmed COVID-19 cases per 100,000 population notified in Ireland by notification and epidemiological date* between week 8 and week 51.

*Epidemiological date: is based on the earliest of dates available on the case and taken from date of onset of symptoms, date of diagnosis, laboratory specimen collection date, laboratory received date, laboratory reported date or event creation date/notification date on CIDR. By using this date rather than event creation/notification date, adjusts for any delays in testing/notification. Please note that the trend in cases by epidemiological date will show a lag for recent days and therefore should be interpreted with caution.

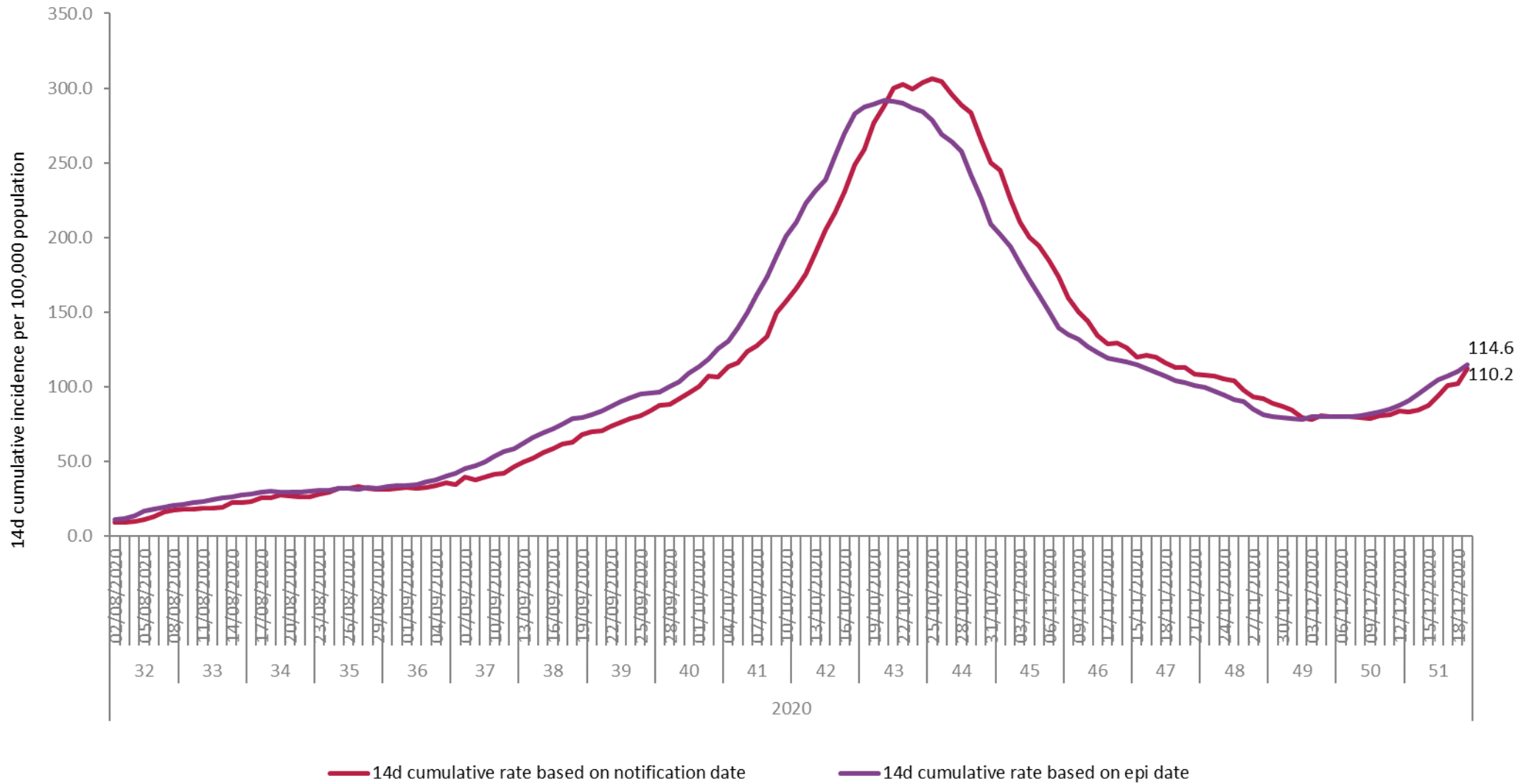


Figure 4b: Cumulative 14-day incidence rate of confirmed COVID-19 cases per 100,000 population notified in Ireland by notification and epidemiological date between week 32 and week 51.

Characteristic		Week 51	Percent
Total number of confirmed cases		3,373	100
Sex	Male:Female ratio	1.0	
	Male	1,701	50.4
	Female	1,659	49.2
	Unknown	13	0.4
Age	Mean age (years)	36	
	Median age (years)	38	
	Age range (years)	0 - 100	
	0-4 yrs	118	3.5
	5-12 yrs	283	8.4
	13-18 yrs	242	7.2
	19-24 yrs	368	10.9
	25-34 yrs	581	17.2
	35-44 yrs	568	16.8
	45-54 yrs	472	14.0
	55-64 yrs	384	11.4
	65-74 yrs	165	4.9
	75-84 yrs	123	3.6
	85+ yrs	68	2.0
	Unknown	1	0.0
Underlying clinical conditions	Yes	901	26.7
	No	2,122	62.9
	Unknown	350	10.4
Symptomatic*	Yes	2,181	64.7
	No	776	23.0
	Unknown	416	12.3

Table 1: Characteristics of confirmed COVID-19 cases notified in Ireland during week 51

*Symptom status is recorded at the time of test and is not updated; therefore, a proportion of the asymptomatic cases may subsequently develop symptoms however this will not be captured in the data.

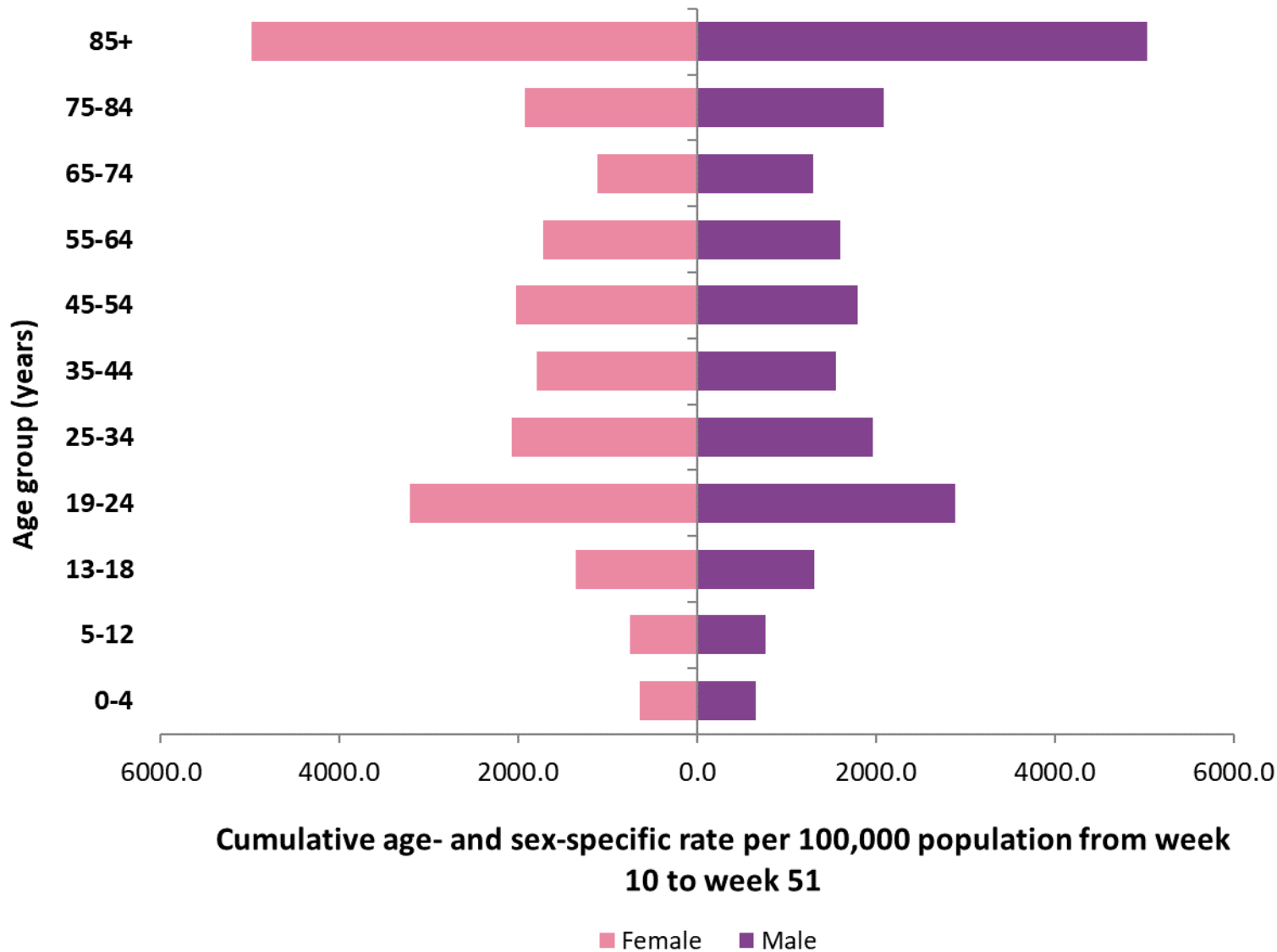


Figure 5a: Cumulative age- and sex-specific incidence rates of confirmed COVID-19 cases per 100,000 population notified in Ireland between week 10 and week 51.

(excluding 28 cases for whom age is unknown and 35 cases for whom sex is unknown and 1 case for whom both are unknown)

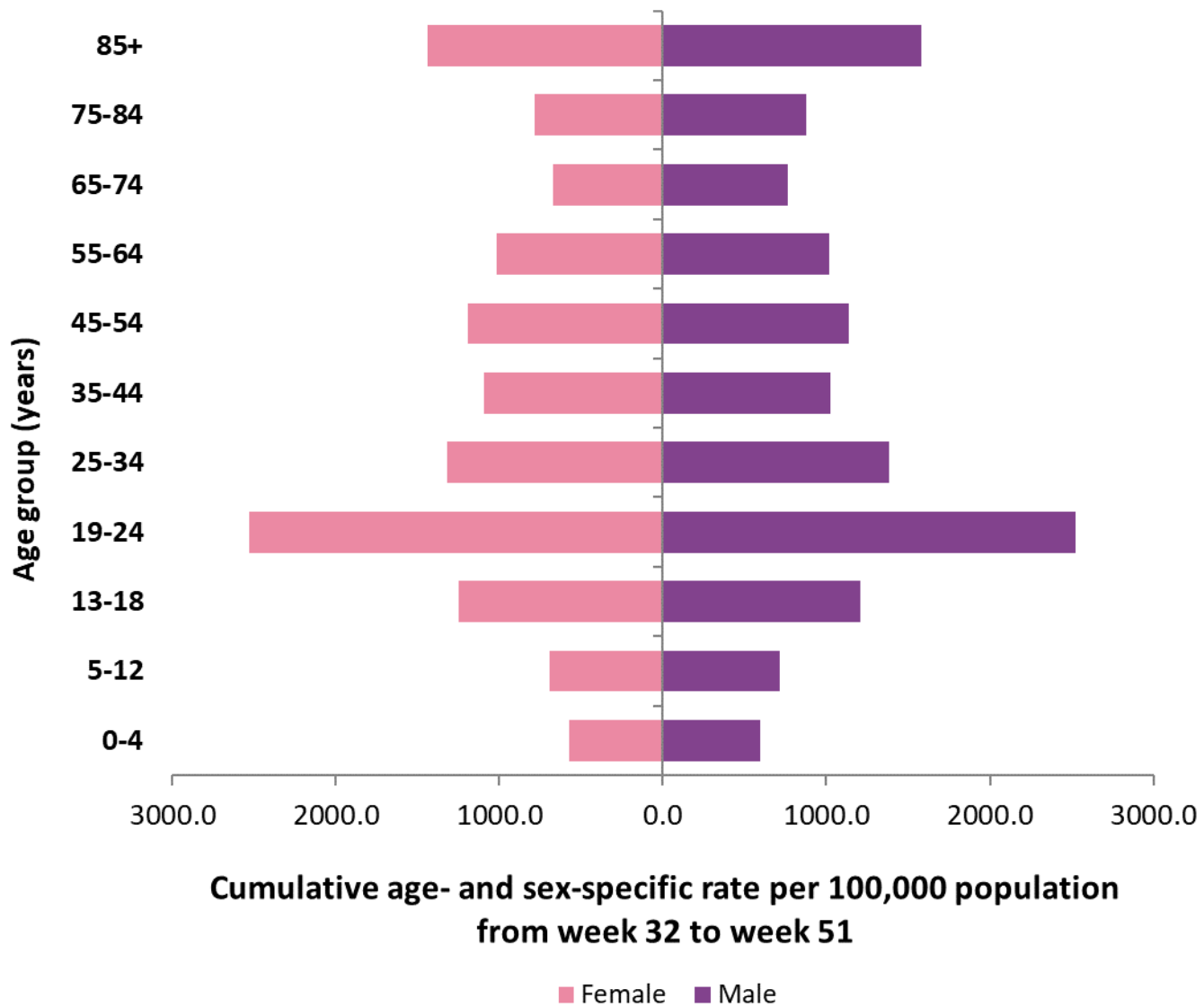


Figure 5b: Cumulative age- and sex-specific incidence rates of confirmed COVID-19 cases per 100,000 population notified in Ireland between week 32 and week 51.

(excluding 14 cases for whom age is unknown and 33 cases for whom sex is unknown)

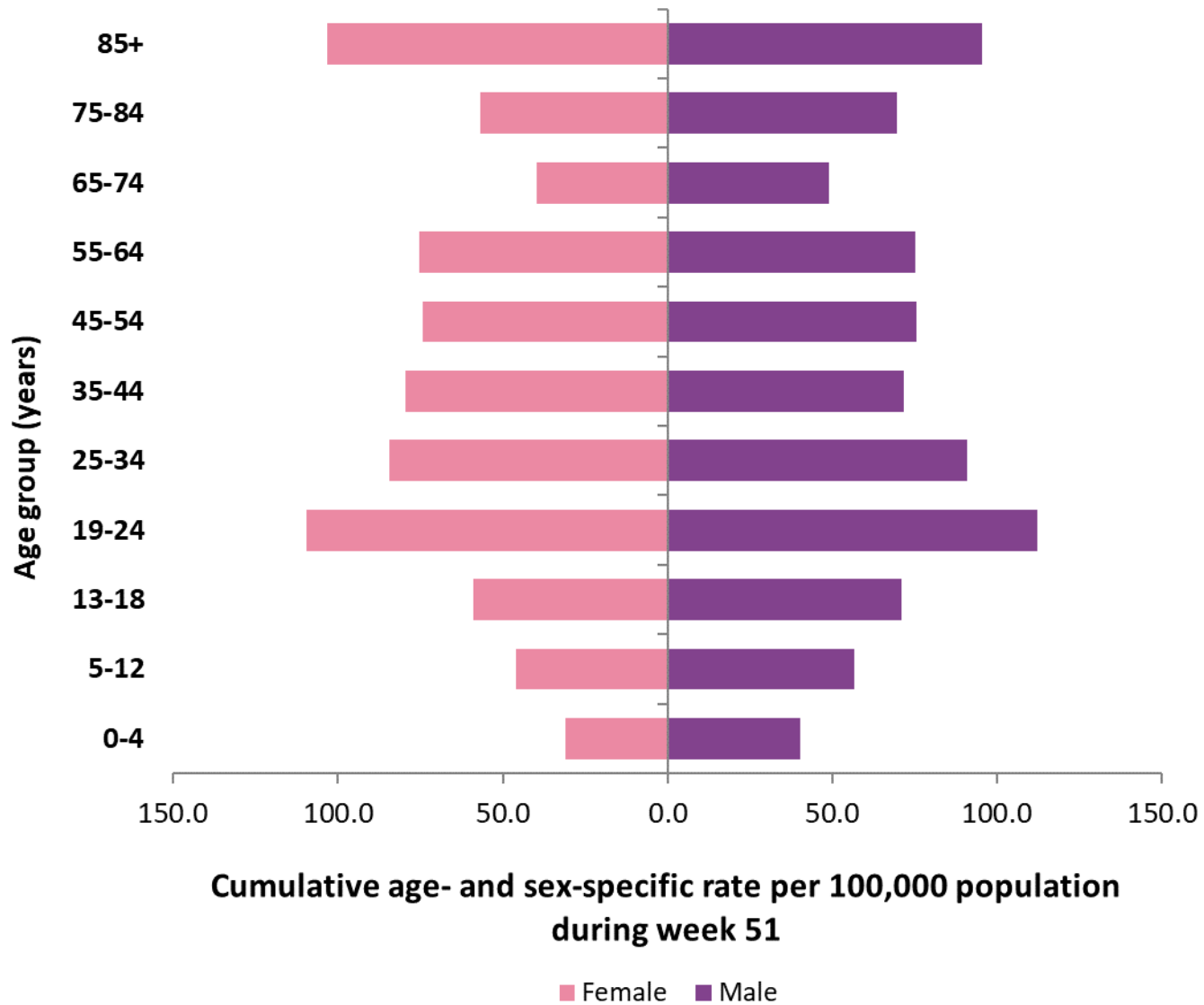


Figure 5c: Cumulative age- and sex-specific incidence rates of confirmed COVID-19 cases per 100,000 population notified in Ireland during week 51.

(excluding 1 case for whom age is unknown)

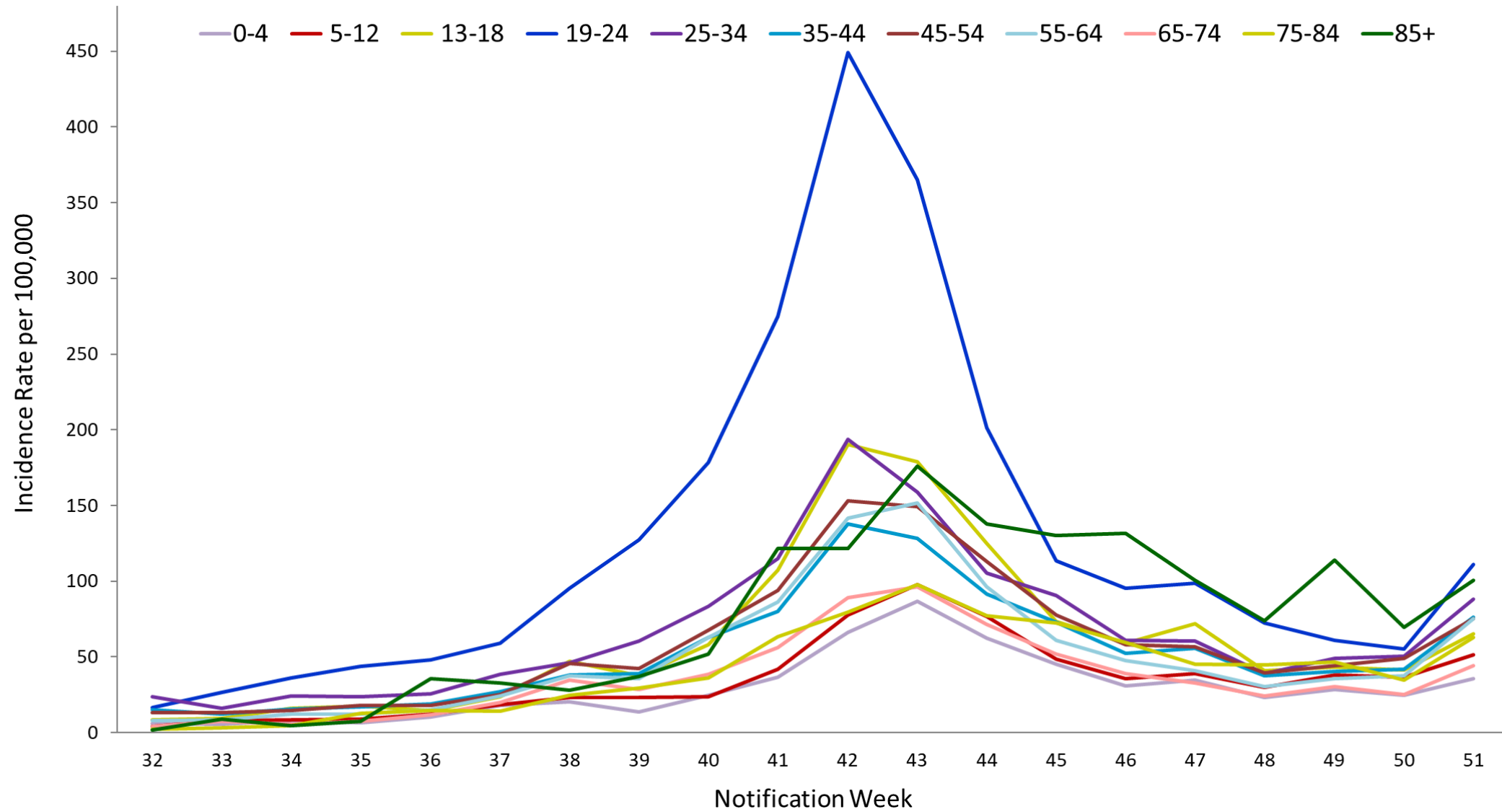


Figure 6a: Weekly age-specific incidence rates of confirmed COVID-19 cases per 100,000 population in Ireland between week 32 and week 51.

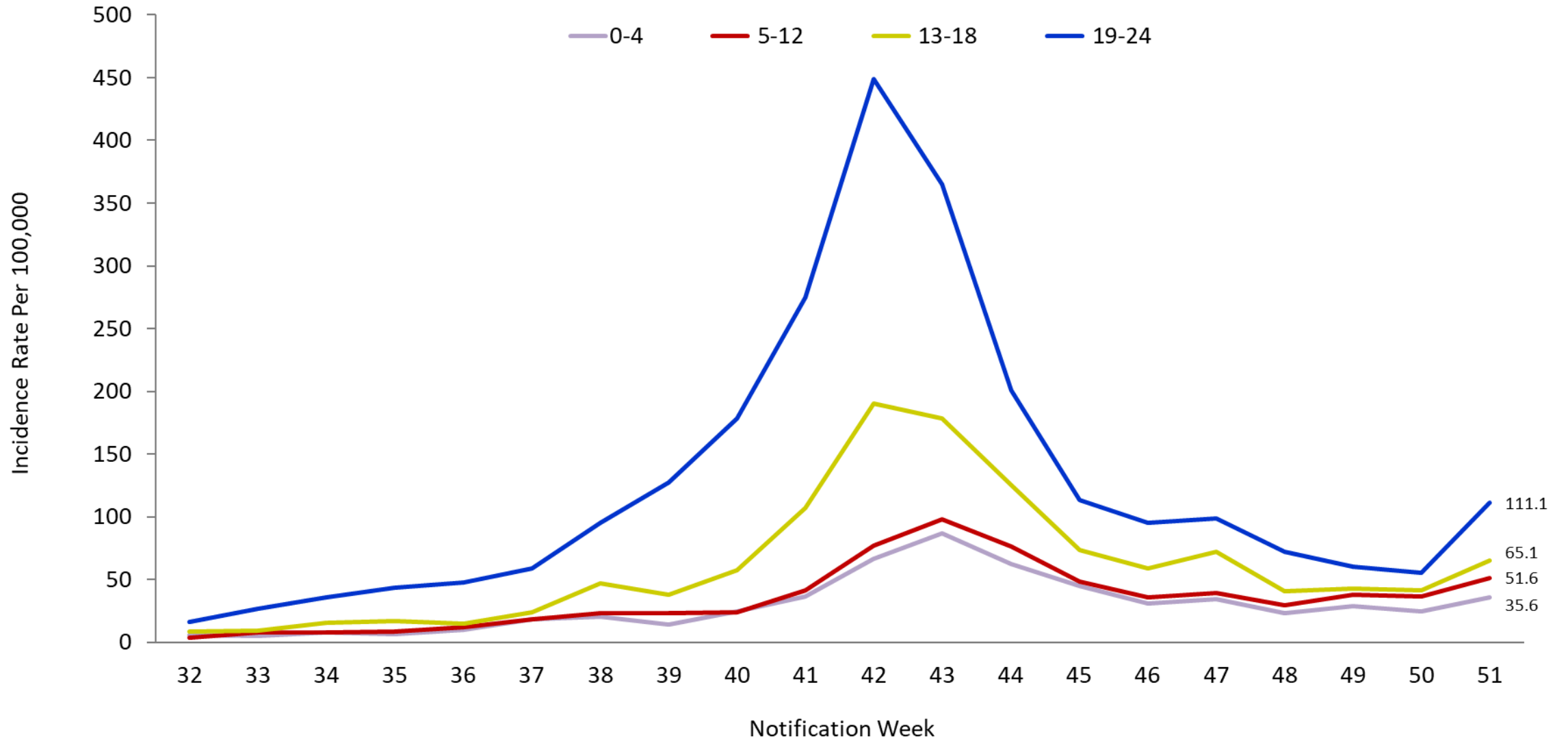


Figure 6b: Weekly age-specific incidence rates of confirmed COVID-19 cases per 100,000 population in Ireland between week 32 and week 51.

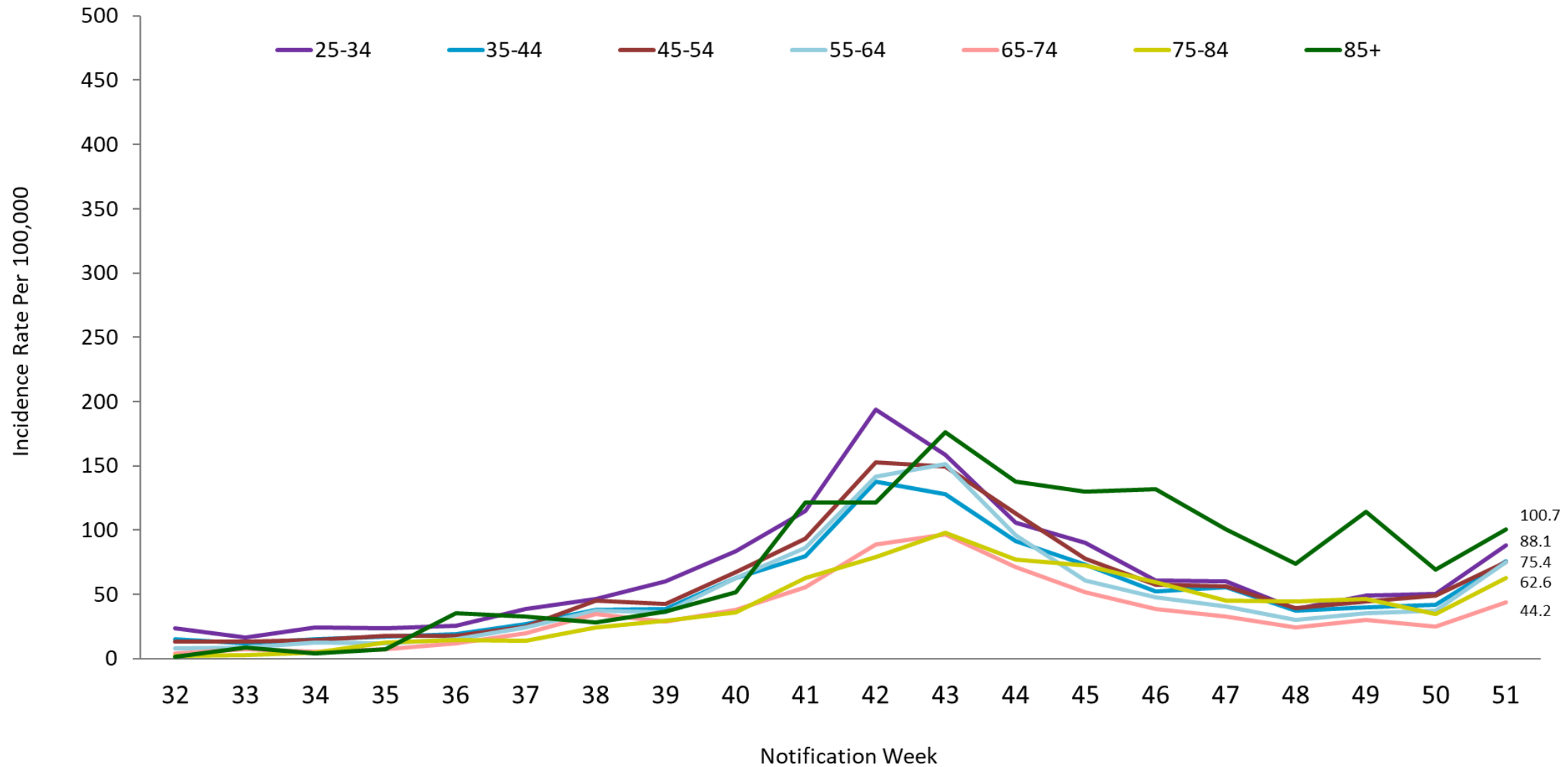


Figure 6c: Weekly age-specific incidence rates of confirmed COVID-19 cases per 100,000 population in Ireland between week 32 and week 51.

Notification Week	Age Range											National
	0-4	5-12	13-18	19-24	25-34	35-44	45-54	55-64	65-74	75-84	85+	
32	6.0	4.0	8.6	16.6	23.5	15.1	13.1	8.1	4.0	2.0	1.5	11.3
33	5.4	7.8	9.4	26.6	16.2	12.1	13.1	8.4	7.5	3.1	8.9	11.5
34	8.1	8.2	15.9	35.9	24.1	15.5	14.4	12.4	5.6	4.6	4.4	14.9
35	6.3	8.9	17.2	43.8	23.7	16.9	18.0	12.2	7.5	12.7	7.4	16.7
36	10.3	12.4	14.8	48.0	25.5	19.0	17.9	14.9	11.8	14.8	35.5	19.2
37	18.1	18.4	23.7	58.9	38.5	26.8	25.1	24.2	20.1	14.2	32.6	27.4
38	20.5	23.3	47.1	95.1	46.3	38.2	45.5	37.3	34.5	24.4	28.1	40.9
39	13.9	23.3	37.7	127.1	60.4	38.8	42.3	35.8	28.6	29.5	37.0	43.3
40	24.7	23.7	57.9	178.4	83.4	63.1	67.6	62.9	38.3	36.1	51.8	63.7
41	36.5	41.7	107.4	275.1	115.0	80.1	93.8	86.1	56.0	63.1	121.4	93.6
42	66.4	77.5	190.5	449.0	193.8	137.9	152.9	141.5	88.9	79.4	121.4	155.3
43	86.9	97.9	178.7	365.3	158.6	128.1	149.2	151.7	96.4	97.7	176.2	148.7
44	62.1	76.7	125.1	201.1	105.5	91.3	112.8	96.1	71.5	77.4	137.7	101.7
45	45.2	48.3	73.5	113.2	90.4	73.0	77.6	60.9	51.7	72.3	130.3	71.9
46	31.1	35.7	58.9	95.1	61.1	52.5	57.8	47.7	38.8	59.5	131.7	54.3
47	34.7	39.2	72.1	98.7	60.4	55.4	56.5	40.9	32.9	45.3	100.7	54.2
48	23.2	29.7	40.9	72.2	39.0	37.4	39.6	30.5	24.1	44.8	74.0	37.8
49	28.7	38.1	43.1	60.7	49.0	40.3	44.2	35.6	30.3	46.8	114.0	42.6
50	24.7	36.5	41.4	55.3	50.3	41.6	49.2	37.3	24.9	34.6	69.6	41.3
51	35.6	51.6	65.1	111.1	88.1	76.0	75.4	75.4	44.2	62.6	100.7	70.8

Figure 7: Heat map of weekly age-specific incidence rates of confirmed COVID-19 cases per 100,000 population in Ireland between week 32 and week 51.

County	Cases		M:F ratio	Median age (years)	Incidence Rate per 100,000
	N	%			
Donegal	248	7.4	1.1	37.5	155.8
Wexford	215	6.4	1.0	47	143.6
Louth	183	5.4	0.8	39	142.0
Carlow	63	1.9	0.9	39	110.7
Cavan	81	2.4	1.1	35	106.3
Laois	89	2.6	1.0	24	105.1
Kerry	148	4.4	1.1	29	100.2
Limerick	194	5.8	1.1	29.5	99.5
Monaghan	52	1.5	0.9	36	84.7
Kilkenny	84	2.5	1.0	42	84.7
Dublin	1112	33.0	1.0	36	82.5
Meath	143	4.2	1.4	34	73.3
Sligo	39	1.2	1.2	32	59.5
Waterford	68	2.0	1.0	28	58.5
Kildare	122	3.6	1.0	37	54.8
Mayo	66	2.0	0.9	35	50.6
Longford	19	0.6	0.7	25	46.5
Cork	210	6.2	0.9	38	38.7
Offaly	27	0.8	0.8	33	34.6
Wicklow	46	1.4	1.2	36.5	32.3
Westmeath	25	0.7	1.8	18	28.2
Tipperary	43	1.3	1.4	48	27.0
Galway	60	1.8	0.8	30	23.3
Roscommon	15	0.4	1.1	40	23.2
Clare	17	0.5	1.4	39	14.3
Leitrim	<5	0.1	1.0	39.5	12.5

Table 2: Characteristics of confirmed COVID-19 cases by county notified in Ireland, during week 51.

	Carlow	Cavan	Clare	Cork	Donegal	Dublin	Galway	Kerry	Kildare	Kilkenny	Laois	Leitrim	Limerick	Longford	Louth	Mayo	Meath	Monaghan	Offaly	Roscommon	Sligo	Tipperary	Waterford	Westmeath	Wexford	Wicklow	National
32	10.5	6.6	10.1	2.6	10.1	4.8	0.8	0.7	107.4	2.0	39.0	3.1	5.1	0.0	3.9	0.8	7.7	1.6	103.9	1.5	6.1	1.3	0.0	1.1	13.4	2.8	11.3
33	35.1	0.0	23.6	2.4	7.5	9.8	2.7	2.0	76.9	12.1	20.1	0.0	18.5	2.4	5.4	0.8	9.7	9.8	32.1	3.1	4.6	11.3	1.7	0.0	2.0	5.6	11.5
34	33.4	1.3	10.1	3.5	5.0	19.1	0.8	2.0	71.5	21.2	16.5	0.0	21.0	7.3	7.0	1.5	7.7	4.9	11.5	6.2	0.0	44.5	11.2	2.3	12.0	4.2	14.9
35	36.9	11.8	16.8	4.4	15.7	26.3	2.3	2.7	31.9	6.0	16.5	0.0	22.1	9.8	7.0	0.8	10.8	29.3	20.5	13.9	1.5	38.9	6.9	5.6	19.4	10.5	16.7
36	12.3	10.5	13.5	4.2	6.3	33.5	7.4	8.1	34.6	17.1	15.3	15.6	38.0	19.6	11.6	3.1	10.8	13.0	25.7	4.6	1.5	20.7	18.9	7.9	10.0	15.4	19.2
37	7.0	5.3	18.5	3.9	20.1	55.1	10.9	6.1	23.4	12.1	22.4	49.9	27.2	36.7	41.1	7.7	13.3	13.0	30.8	13.9	1.5	5.6	35.3	28.2	17.4	28.8	27.4
38	29.9	17.1	21.0	18.6	63.4	80.0	17.4	12.9	36.4	11.1	21.3	15.6	20.0	9.8	61.3	17.6	20.5	26.1	33.4	20.1	15.3	11.3	51.6	21.4	17.4	42.1	40.9
39	12.3	30.2	26.9	43.5	121.2	71.9	36.8	10.2	40.0	16.1	10.6	12.5	12.8	29.4	43.4	11.5	26.7	66.8	23.1	55.8	10.7	9.4	15.5	29.3	8.7	26.7	43.3
40	31.6	59.1	73.2	61.0	143.2	89.4	51.9	34.5	54.8	29.2	64.9	18.7	52.3	102.8	32.6	19.9	40.0	110.8	51.3	105.4	44.3	32.0	18.9	36.0	32.1	50.6	63.7
41	28.1	279.6	186.0	96.5	201.6	83.1	100.0	74.5	86.7	43.3	68.5	81.1	106.7	105.2	76.0	52.1	134.3	205.3	82.1	79.0	114.4	37.0	44.8	87.9	79.5	36.5	93.6
42	123.0	530.4	133.8	177.8	142.0	139.2	172.1	140.1	158.2	100.8	106.3	149.8	142.6	124.8	111.7	98.8	328.1	166.2	102.6	142.5	175.5	72.1	84.4	226.4	192.4	87.1	155.3
43	158.1	438.5	126.2	166.9	178.4	114.4	200.0	150.3	147.4	72.6	131.1	99.9	148.8	141.9	172.2	147.1	313.8	203.6	88.5	131.7	253.3	61.4	118.8	194.9	118.9	62.5	148.7
44	101.9	156.2	101.8	137.0	142.6	102.1	97.7	68.4	92.1	55.4	81.5	15.6	116.0	100.3	119.5	95.0	147.1	71.7	61.6	74.4	103.8	68.3	86.1	110.4	52.8	59.7	101.7
45	61.5	47.3	58.9	60.6	152.6	80.1	47.7	92.8	48.5	84.7	93.3	25.0	100.1	53.8	55.9	78.2	94.3	70.0	51.3	82.1	79.3	53.3	62.0	85.6	30.1	37.2	71.9
46	31.6	55.1	36.2	29.8	122.5	58.2	38.4	34.5	42.2	45.3	42.5	53.1	99.0	53.8	95.4	36.8	52.8	55.4	84.7	83.7	33.6	48.3	92.1	84.5	19.4	31.6	54.3
47	45.7	42.0	53.9	48.8	108.0	59.9	25.2	25.7	41.8	51.4	21.3	18.7	105.2	41.6	111.0	43.7	73.8	52.1	35.9	86.8	39.7	42.6	59.4	31.5	18.0	30.2	54.2
48	31.6	19.7	14.3	24.5	111.2	43.7	20.2	21.0	21.1	83.6	29.5	3.1	60.5	44.0	75.3	36.8	24.1	31.0	21.8	23.2	21.4	44.5	42.2	13.5	7.3	52.7	37.8
49	73.8	40.7	19.4	13.4	112.4	50.8	31.0	12.2	27.4	85.7	26.0	12.5	80.6	46.5	83.0	43.7	25.6	97.7	37.2	24.8	15.3	45.1	21.5	10.1	12.0	68.1	42.6
50	84.3	68.3	12.6	12.9	107.4	42.3	28.7	8.1	29.2	112.9	69.7	12.5	51.3	97.9	93.1	65.9	34.4	39.1	30.8	20.1	33.6	38.2	46.5	16.9	25.4	36.5	41.3
51	110.7	106.3	14.3	38.7	155.8	82.5	23.3	100.2	54.8	84.7	105.1	12.5	99.5	46.5	142.0	50.6	73.3	84.7	34.6	23.2	59.5	27.0	58.5	28.2	143.6	32.3	70.8

Figure 8: Heat map of weekly incidence rates of confirmed COVID-19 cases per 100,000 population, by county, notified in Ireland between week 32 and week 51.

	HSE-E	HSE-M	HSE-MW	HSE-NE	HSE-NW	HSE-SE	HSE-S	HSE-W	National
32	17.9	39.3	6.0	5.6	8.1	5.7	2.2	0.9	11.3
33	18.2	14.7	17.4	7.0	5.8	10.2	2.3	2.2	11.5
34	24.6	10.3	16.4	6.1	3.1	25.5	3.2	1.8	14.9
35	25.8	16.4	17.4	12.4	10.1	22.1	4.1	3.5	16.7
36	32.2	16.4	25.2	11.3	6.2	17.0	5.1	5.7	19.2
37	48.8	28.4	20.3	19.8	19.0	17.4	4.3	10.4	27.4
38	71.2	23.3	18.7	32.2	45.0	24.1	17.4	17.9	40.9
39	64.0	22.2	16.1	37.4	79.1	12.5	36.3	32.2	43.3
40	81.7	58.2	53.2	50.6	102.0	29.6	55.3	50.3	63.7
41	79.7	83.8	116.6	151.9	163.6	52.3	91.8	83.2	93.6
42	137.3	145.1	127.3	280.2	150.8	120.7	169.7	146.8	155.3
43	114.3	145.7	129.9	280.9	186.9	98.2	163.3	175.0	148.7
44	97.3	91.0	110.4	131.2	116.3	61.3	122.4	93.6	101.7
45	72.4	74.6	81.8	72.8	117.5	52.9	67.5	61.4	71.9
46	53.9	68.8	66.0	65.6	90.7	50.2	30.8	44.4	54.3
47	55.1	31.1	76.6	76.3	79.1	42.1	43.9	39.3	54.2
48	41.5	24.6	40.5	38.7	74.4	41.3	23.7	25.4	37.8
49	49.2	27.4	51.2	53.9	74.8	43.9	13.2	33.8	42.6
50	40.1	47.2	36.6	57.1	76.4	56.2	11.9	38.2	41.3
51	74.8	54.7	59.7	99.7	112.8	89.0	51.8	31.1	70.8

Notification Week

Figure 9: Weekly Incidence rates of confirmed COVID-19 cases per 100,000 population, by HSE area, notified in Ireland between week 32 and week 51.

	CHO1	CHO2	CHO3	CHO4	CHO5	CHO6	CHO7	CHO8	CHO9
32	6.9	0.9	6.0	2.2	5.7	3.7	37.0	21.8	5.0
33	5.4	2.2	17.4	2.3	10.2	5.7	29.0	11.1	13.5
34	3.1	1.8	16.4	3.2	25.5	9.1	36.9	8.7	20.3
35	13.5	3.5	17.4	4.1	22.1	18.8	31.4	12.6	23.7
36	8.2	5.7	25.2	5.1	17.0	27.1	35.7	13.6	31.2
37	15.6	10.4	20.3	4.3	17.4	37.6	40.0	26.2	65.8
38	37.1	17.9	18.7	17.4	24.1	55.6	65.7	30.2	87.1
39	68.5	32.2	16.1	36.3	12.5	52.5	56.8	27.9	79.3
40	96.1	50.3	53.2	55.3	29.6	74.9	72.9	46.8	95.9
41	194.5	83.2	116.6	91.8	52.3	56.6	80.3	97.7	93.3
42	228.7	146.8	127.3	169.7	120.7	91.3	144.4	195.1	157.5
43	240.2	175.0	129.9	163.3	98.2	80.6	114.9	203.6	134.5
44	118.3	93.6	110.4	122.4	61.3	67.9	94.5	114.2	118.6
45	97.6	61.4	81.8	67.5	52.9	49.1	63.3	76.5	97.2
46	79.0	44.4	66.0	30.8	50.2	51.2	54.7	69.1	54.7
47	68.5	39.3	76.6	43.9	42.1	45.9	51.3	61.0	65.0
48	57.8	25.4	40.5	23.7	41.3	55.3	31.8	34.9	44.1
49	72.6	33.8	51.2	13.2	43.9	66.0	34.2	38.3	56.0
50	69.8	38.2	36.6	11.9	56.2	48.0	31.4	52.5	45.2
51	108.4	31.1	59.7	51.8	89.0	74.4	51.0	78.5	102.0

Figure 10: Weekly Incidence rates of confirmed COVID-19 cases by CHO notified in Ireland between week 32 and week 51.

	CCA1	CCA2	CCA3	CCA4	CCA5	CCA6	CCA7	CCA8
	Dublin South	Dublin South East	Dublin South City	Dublin South West	Dublin West	Dublin North West	Dublin North Central	Dublin North
32	5.9	2.4	4.7	6.2	3.2	4.8	5.8	4.6
33	4.4	6.5	5.3	10.6	5.8	13.5	12.3	14.3
34	7.3	15.4	11.3	17.4	36.7	23.1	34.3	9.6
35	25.0	20.2	32.7	29.8	33.5	32.8	22.6	17.0
36	16.9	48.5	32.7	38.5	41.2	29.9	31.7	32.0
37	22.8	58.2	49.4	47.9	51.5	85.3	60.2	53.6
38	35.3	84.9	70.0	92.6	83.7	117.5	83.5	64.8
39	33.1	97.0	57.4	72.1	70.2	82.4	95.1	67.5
40	54.4	116.4	67.4	90.1	93.3	111.3	119.7	69.5
41	33.8	98.6	60.7	65.3	113.3	106.5	113.2	71.0
42	57.3	122.9	93.4	118.7	215.7	222.1	150.1	110.4
43	50.0	125.3	73.4	95.7	140.3	168.1	142.3	103.0
44	48.5	92.2	62.0	105.7	126.2	137.8	107.4	110.0
45	25.7	80.8	48.7	74.0	95.3	117.0	95.1	82.6
46	41.2	82.5	57.4	47.9	81.1	73.2	60.8	36.3
47	35.3	72.8	36.0	67.7	68.2	72.3	100.3	38.2
48	44.1	69.5	34.0	44.1	35.4	43.8	64.0	32.4
49	47.0	80.8	32.7	38.5	44.4	60.2	69.2	44.8
50	29.4	75.2	30.7	27.3	42.5	34.7	62.1	43.6
51	52.2	143.1	46.0	43.5	62.4	106.5	135.8	78.3

Notification Week

Figure 11: Weekly Incidence rates of confirmed COVID-19 cases by Dublin Local Health Offices (LHOs) notified in Ireland between week 32 and week 51.

Note: Local health offices (LHOs) came into operation on 1st September 2005, replacing Community Care Areas (CCAs). LHO population denominators are used in this report rather than CCA population denominators. The LHO rates were calculated using Census 2016 LHO denominator data extracted from the HSE Health Atlas and are not a direct match to the corresponding CCAs.

Laboratory data for COVID-19 cases

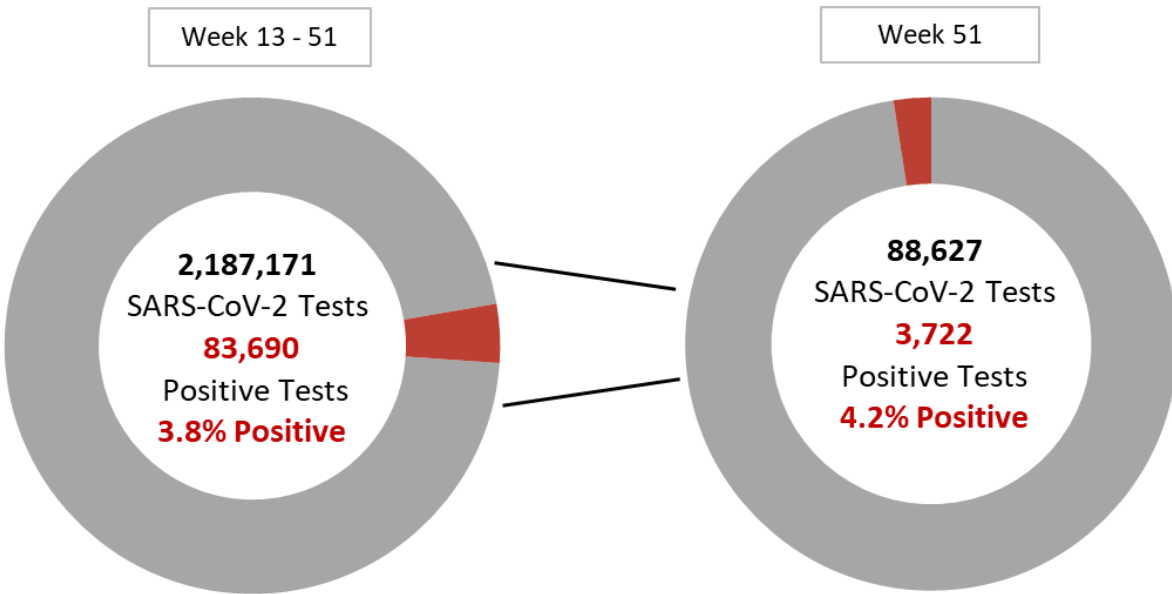


Figure 12a: Number of SARS-CoV-2 tests and positive tests* in Ireland between week 13 and week 51.

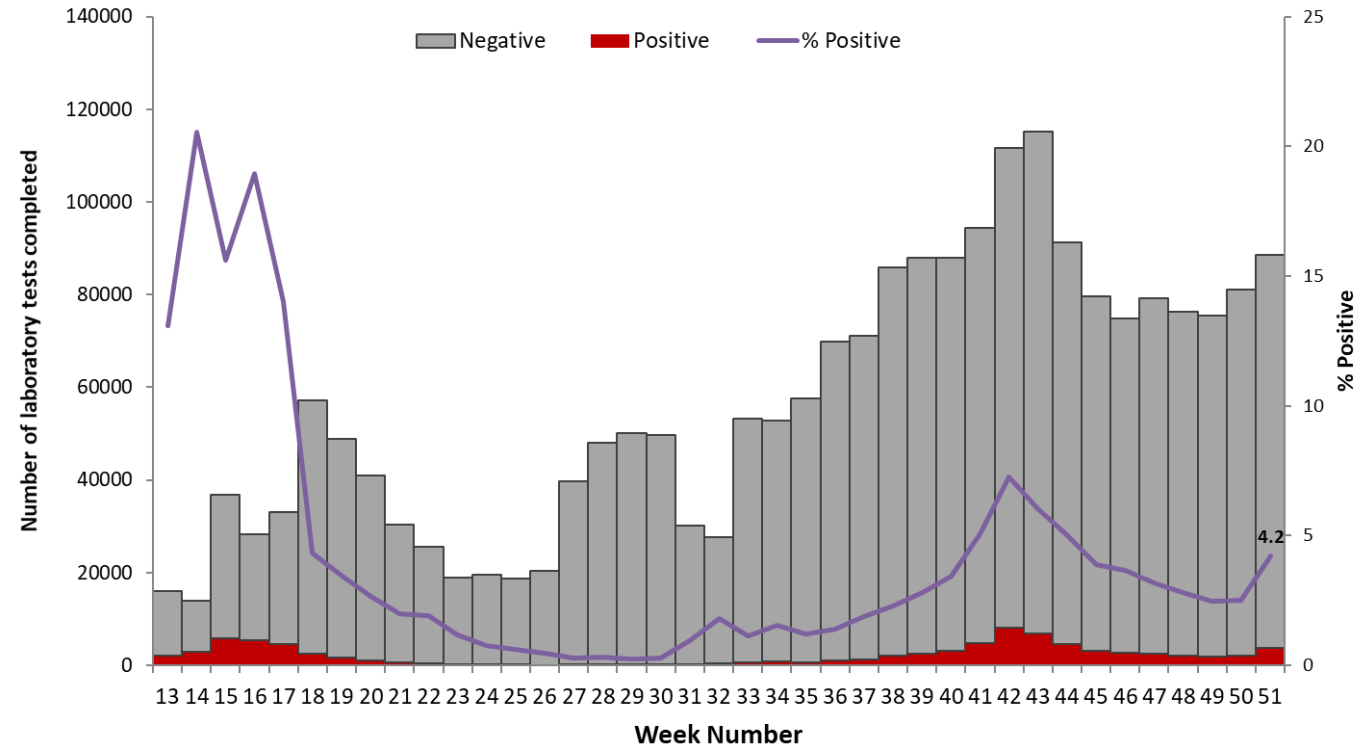


Figure 12b: Number of SARS-CoV-2 negative and positive tests* completed in Ireland between week 13 and week 51.

*positive test refers to all positive specimens and includes duplicates and individuals who were retested

Hospitalisations and ICU admissions among COVID-19 cases

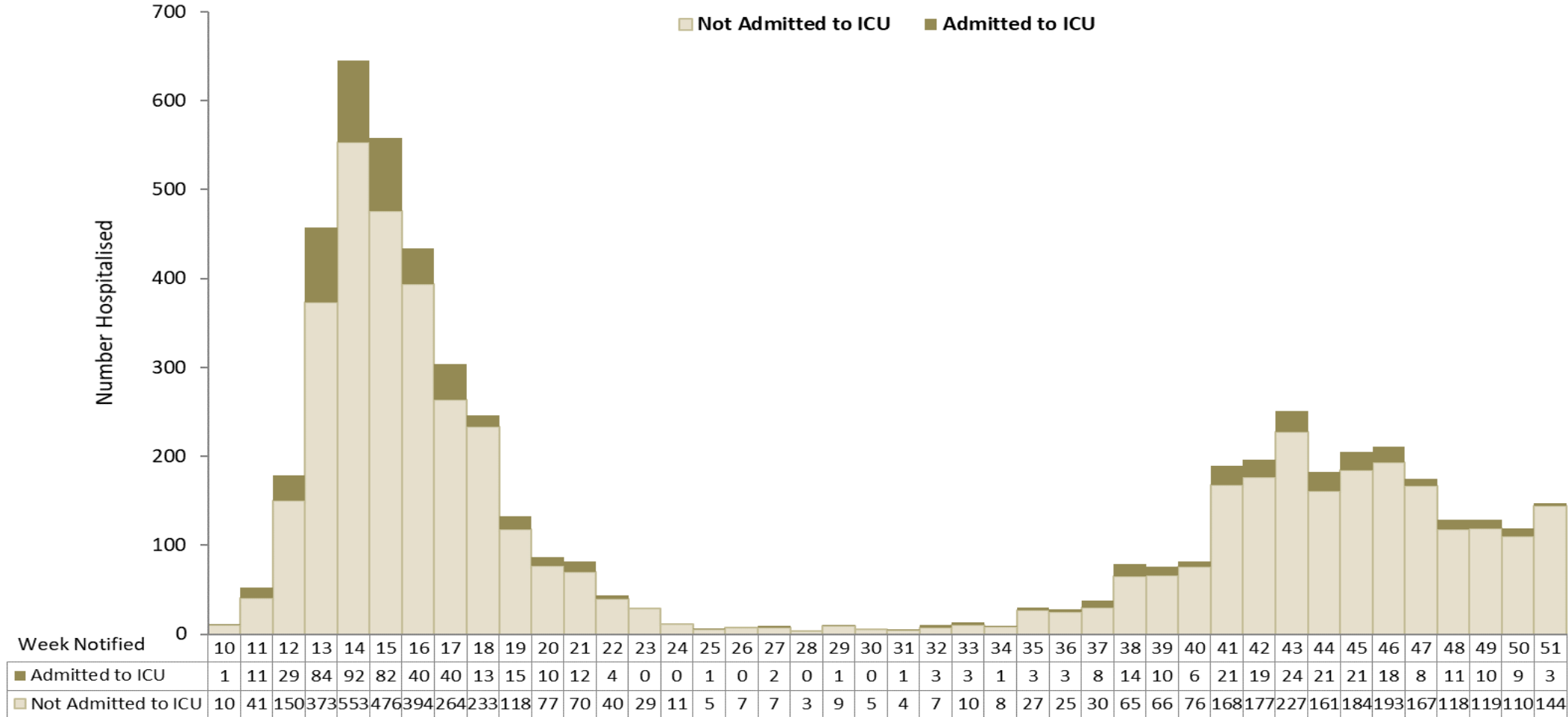


Figure 13: Number of hospitalised COVID-19 cases based on ICU admission status in Ireland between week 10 and week 51.*

*Please note that the most recent weeks may not yet reflect all admissions.

Deaths among COVID-19 cases

	Number	Percent
Total number of deaths	2,158	
confirmed	1,898	88.0
probable	95	4.4
possible	165	7.6
Number hospitalised who died	990	45.9
admitted to ICU who died	152	7.0
not admitted to ICU who died	838	38.8
Number of imported cases who died	5	0.2
Number of HCWs who died	8	0.4
Number with underlying conditions who died	2,007	93.0
Males who died	1098	50.9
M:F ratio	1.04	
Median age (years)	83	
Mean age (years)	81	
Age range (years)	17 - 105	

Table 3: Summary of deaths in all COVID-19 cases notified in Ireland between week 10 and week 51.

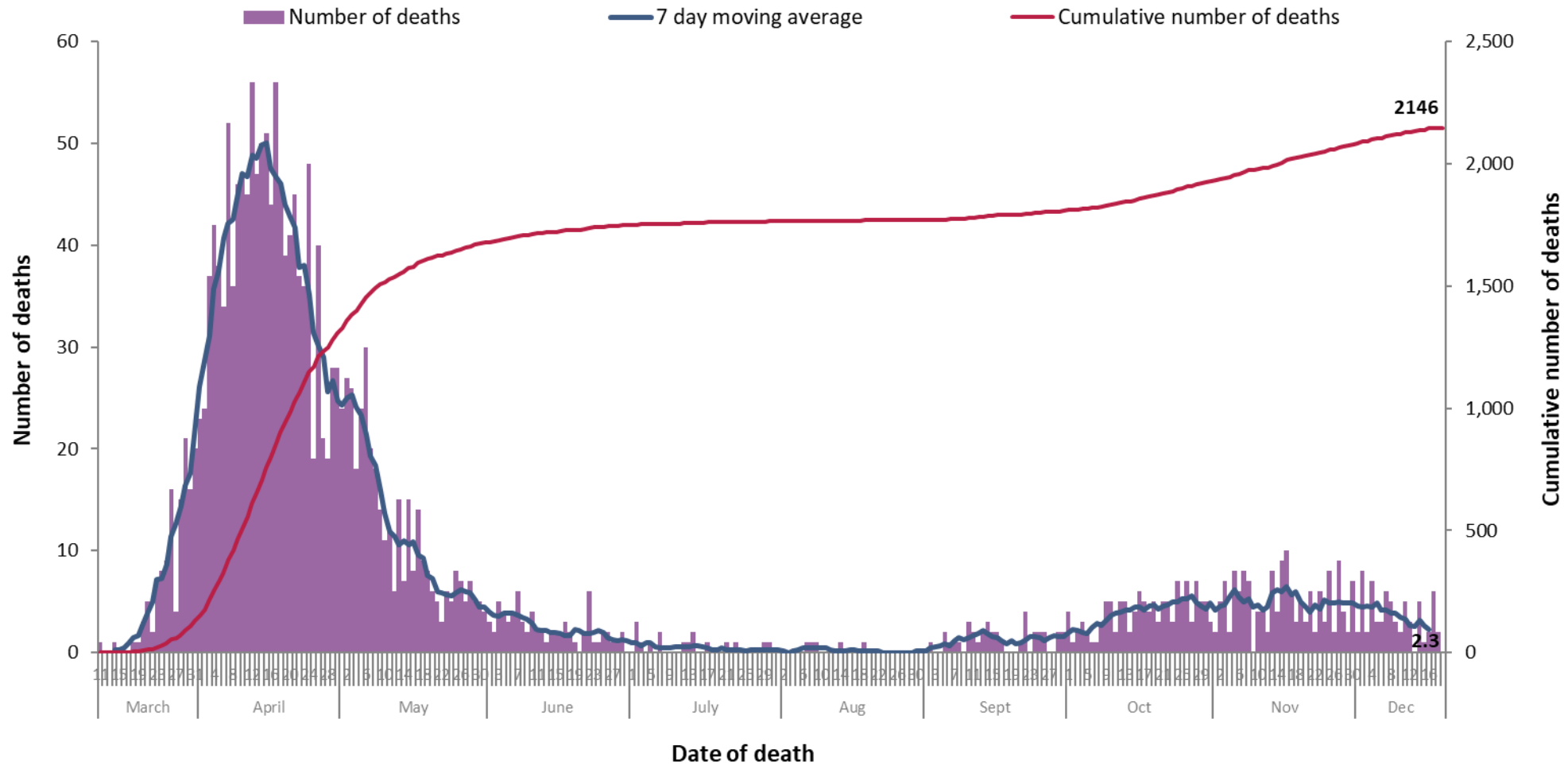


Figure 14a: Daily and 7-day moving average number of deaths among COVID-19 cases notified in Ireland by date of death and cumulative total between week 10 and week 51.

* Date of death is not yet available for twelve cases

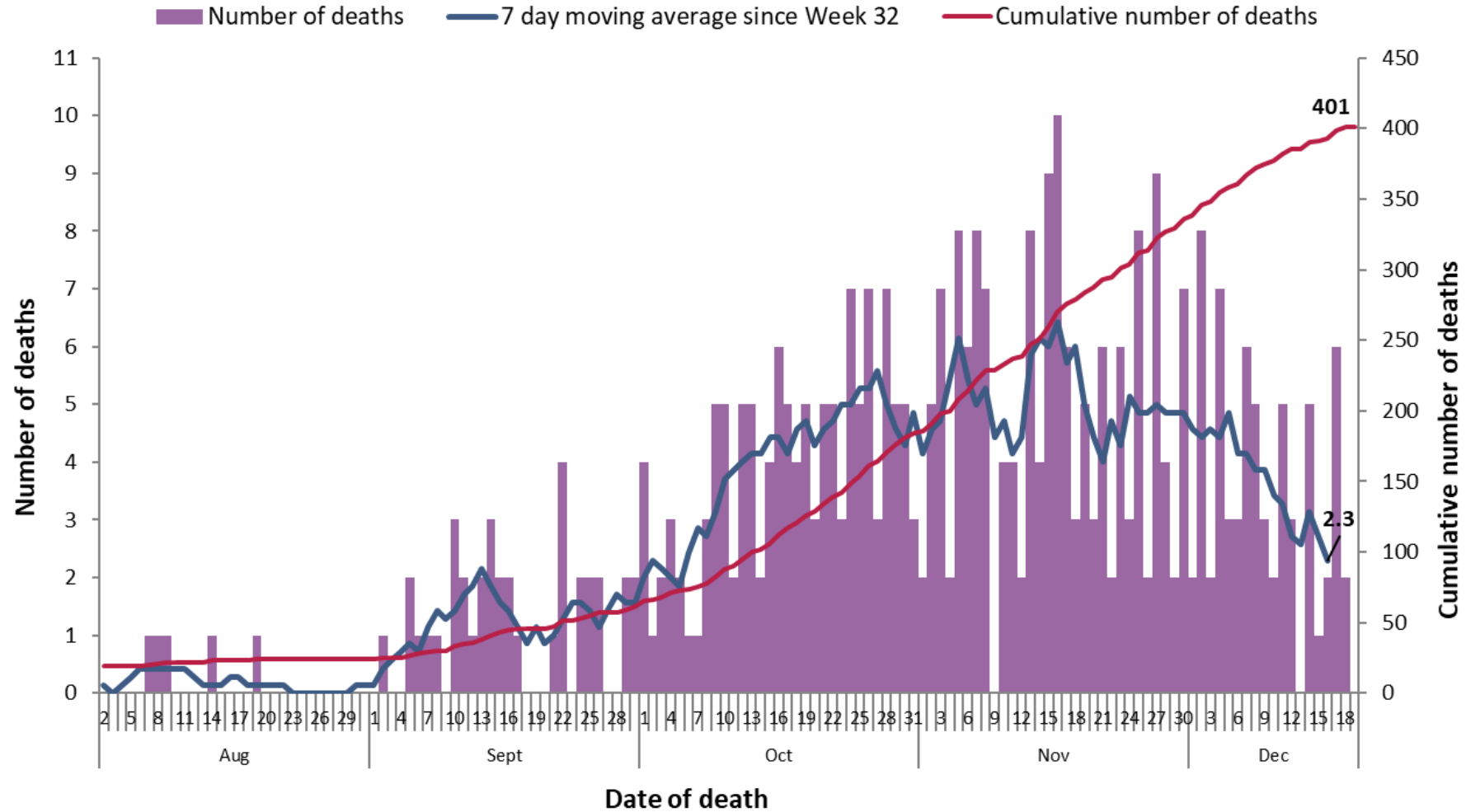


Figure 14b: Daily and 7-day moving average number of deaths among COVID-19 cases notified in Ireland by date of death and cumulative total, between week 32 and week 51.

Please note: a lag in time between reporting of deaths and data extraction is expected and as such most recent dates will not yet reflect all deaths on that date.

Please refer to the Health Protection Surveillance (HPSC) website for specific reports on

- [14 Day report](#) epidemiology of COVID-19 in Ireland
- [Outbreaks/clusters](#) in Ireland COVID-19 weekly report
- [Underlying Conditions](#) in confirmed cases of COVID-19 in Ireland weekly report
- [Healthcare Workers](#) in Ireland COVID-19 weekly report

Acknowledgements

Sincere thanks are extended to all those who are participating in the collection of data and reporting of data used in these reports. This includes the HSE COVID-19 Contact Management Programme (CMP), staff in ICU units, notifying clinicians, laboratory staff, public health doctors, nurses, surveillance scientists, microbiologists and administrative staff.

Report prepared by COVID-19 Epidemiology Team, HPSC

Technical Notes

1. Data Source

- Data are based on statutory notifications and were extracted from Computerised Infectious Disease Reporting (CIDR) system at 13:26 on 20/09/2020. Data are provisional and subject to ongoing review, validation and update. As a result, figures in this report may differ from previously published figures.

2. Epidemiological date

- Epidemiological date is based on the earliest of dates available on the case and taken from date of onset of symptoms, date of diagnosis, laboratory specimen collection date, laboratory received date, laboratory reported date or event creation date/notification date on CIDR. By using this date rather than event creation/ notification date, adjusts for any delays in testing/notification.

3. Population data

- Population data were taken from Census 2016. Data were aggregated into the following age groups for the analysis: 0-4 years, 5-12 years, 13-18 years, 19-24 years, 25-34 years, 35-44 years, 45-54 years, 55-64 years, 65-74 years, 75-84 years and ≥ 85 years.

Appendix 1: Epidemiological weeks, start and end dates, 2020

- Note: Epidemiological week is from Sunday to Saturday in line with the [Infectious Disease Regulations 1981](#) and subsequent amendments

Year	Week	Start date	End date
2020	1	29/12/2019	04/01/2020
2020	2	05/01/2020	11/01/2020
2020	3	12/01/2020	18/01/2020
2020	4	19/01/2020	25/01/2020
2020	5	26/01/2020	01/02/2020
2020	6	02/02/2020	08/02/2020
2020	7	09/02/2020	15/02/2020
2020	8	16/02/2020	22/02/2020
2020	9	23/02/2020	29/02/2020
2020	10	01/03/2020	07/03/2020
2020	11	08/03/2020	14/03/2020
2020	12	15/03/2020	21/03/2020
2020	13	22/03/2020	28/03/2020
2020	14	29/03/2020	04/04/2020
2020	15	05/04/2020	11/04/2020
2020	16	12/04/2020	18/04/2020
2020	17	19/04/2020	25/04/2020
2020	18	26/04/2020	02/05/2020
2020	19	03/05/2020	09/05/2020
2020	20	10/05/2020	16/05/2020
2020	21	17/05/2020	23/05/2020
2020	22	24/05/2020	30/05/2020
2020	23	31/05/2020	06/06/2020
2020	24	07/06/2020	13/06/2020
2020	25	14/06/2020	20/06/2020
2020	26	21/06/2020	27/06/2020

Year	Week	Start date	End date
2020	27	28/06/2020	04/07/2020
2020	28	05/07/2020	11/07/2020
2020	29	12/07/2020	18/07/2020
2020	30	19/07/2020	25/07/2020
2020	31	26/07/2020	01/08/2020
2020	32	02/08/2020	08/08/2020
2020	33	09/08/2020	15/08/2020
2020	34	16/08/2020	22/08/2020
2020	35	23/08/2020	29/08/2020
2020	36	30/08/2020	05/09/2020
2020	37	06/09/2020	12/09/2020
2020	38	13/09/2020	19/09/2020
2020	39	20/09/2020	26/09/2020
2020	40	27/09/2020	03/10/2020
2020	41	04/10/2020	10/10/2020
2020	42	11/10/2020	17/10/2020
2020	43	18/10/2020	24/10/2020
2020	44	25/10/2020	31/10/2020
2020	45	01/11/2020	07/11/2020
2020	46	08/11/2020	14/11/2020
2020	47	15/11/2020	21/11/2020
2020	48	22/11/2020	28/11/2020
2020	49	29/11/2020	05/12/2020
2020	50	06/12/2020	12/12/2020
2020	51	13/12/2020	19/12/2020
2020	52	20/12/2020	26/12/2020
2020	53	27/12/2020	02/01/2021



Weekly Report on the Epidemiology of COVID-19 in Ireland

Week 51

Health Protection Surveillance Centre

COVID-19 Epidemiology Team, HPSC, 21/12/2020

Dates to note:

- **Week 51 (13th December to 19th December 2020)**
- **Week 32 (2nd to 8th August 2020)**
- **Week 10 (1st to 7th March 2020)– The beginning of the pandemic in Ireland**

Note: The epidemiological weeks in this report, run from Sunday to Saturday, please refer to appendix 1 for a complete list of epidemiological weeks with start and end dates.

Note: Data were extracted from Computerised Infectious Disease Reporting (CIDR) system on 12/12/2020 and are provisional and subject to ongoing review, validation and update. As a result, figures in this report may differ from previously published figures.